

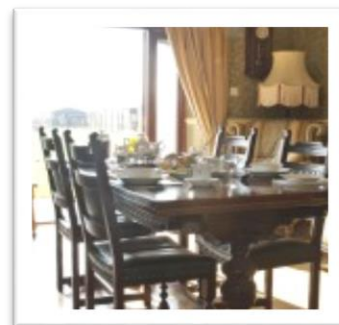
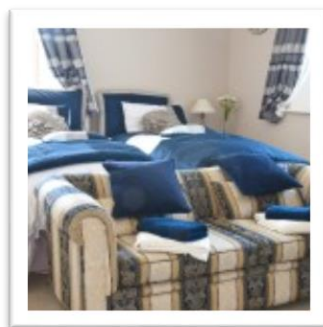
Cleers View Farm
Somerton Hill
Somerton
Somerset
TA10 9AD

Tel:- 01458 272175

Email: maiseywebb@aol.com

Facilities.

Disabled access	Yes
Bath/Shower	Shower in every room. Two rooms available with bath
Pets	Yes but prior phone call necessary
Family rooms	One double bedroom and two rooms with a super king which can convert into twins and one of the two can be a family room with a double sofa bed
Catering for special diets	Yes
Self-catering facilities	Fridge and microwave in room
Meal availability	Breakfast only
TV/DVD	In room
Tea and coffee making	Yes
Cot available	Check with proprietor
High chair available	Check with proprietor
Close to main road	No
Garden	Working arable farm
Costs	£45 per person per night though double room for double occupancy £65 other two £80 for double occupancy
Wi Fi	Available throughout



Website

cleersviewfarm.co.uk

*hope that this list will help you find suitable accommodation for your visit to **Bibic**. It is your responsibility to contact the proprietors before booking to ensure that your needs can be met. ***Please remember to check prices****

Withy Cottages (C/O Knapp House)
 Knapp Lane
 Huish Episcopi
 Langport
 TA10 9QY
 Telephone:- 01458 253099

Facilities.

Disabled access	Yes
Bath/Shower	Bath with shower over
Pets	
Family rooms	Both cottages sleep a min of 4 people in two separate rooms.
Catering for special diets	Self catered
Self-catering facilities	Yes
Meal availability	Basic breakfast provided
TV/DVD	Yes
Tea and coffee making	Yes
Cot available	Yes
High chair available	Yes
Close to main road	No
Garden	Yes
Costs	Check website – varied in/out season prices
Wi Fi	No
Website	www.withycottages.co.uk
Other facilities	Spa Facilities



hope that this list will help you find suitable accommodation for your visit to **Bibic**. It is your responsibility to contact the proprietors before booking to ensure that your needs can be met. ***Please remember to check prices***

Pitts Farm Cottages

Hermitage Road

Upton

Long Sutton

Somerset

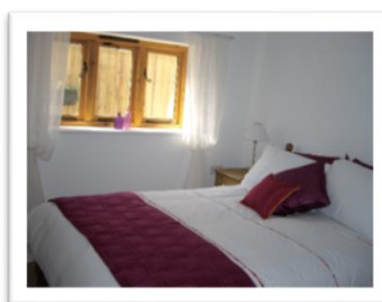
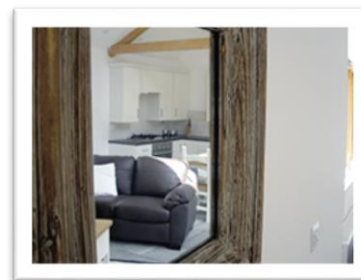
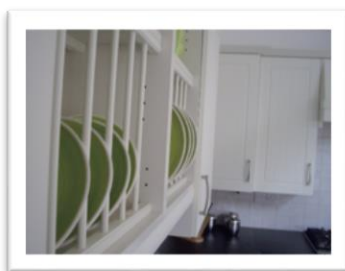
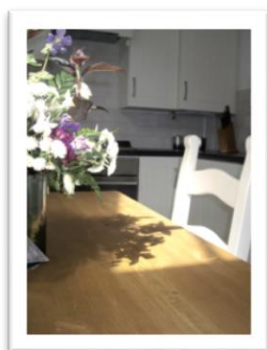
TA10 9NW

Telephone: - 01458 241769

Email: - sallyann@pittsfarmcottages.com or anne@pittsfarmcottages.com

Facilities.

Disabled access	Yes – ‘Stable Cottage’ single floor with 15cm steps up into Master Bedroom. ‘Barn Cottage’ Living accommodation on ground floor, bedrooms on first
Bath/Shower	One On-suit & separate family bathroom
Pets	Yes – ‘Barn Cottage’ only
Family rooms	No
Catering for special diets	N/A
Self-catering facilities	Yes
Meal availability	None
TV/DVD	Yes
Tea and coffee making	Yes
Cot available	Yes
High chair available	Yes
Close to main road	No – not very far
Garden	Yes
Costs	Check website – varied in/out season prices & lenth of stay.
Wi Fi	No
Website	www.pittsfarmcottagescottages.com

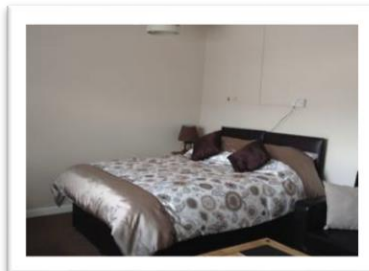
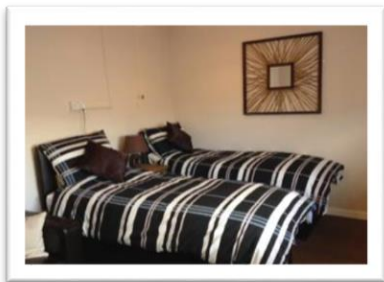


hope that this list will help you find suitable accommodation for your visit to **Bibic**. It is your responsibility to contact the proprietors before booking to ensure that your needs can be met. ***Please remember to check prices***

Smith Cottages
 Bow Street
 Langport
 Somerset
 TA10 9PH
[Tel:- 01458 741641](tel:01458741641)
 Mobile:- 07786 012176

Facilities.

Disabled access	Yes
Bath/Shower	Shower room per Cottage.
Pets	No
Family rooms	See Website.
Catering for special diets	No
Self-catering facilities	Yes
Meal availability	No, but very close to town centre & Self-catering facility's.
TV/DVD	Yes
Tea and coffee making	Yes
Cot available	Yes
High chair available	Yes
Close to main road	Yes
Garden	BBQ and Outside seating area.
Costs	From £41 per Night (min 2 night stay)



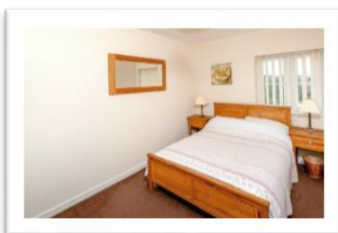
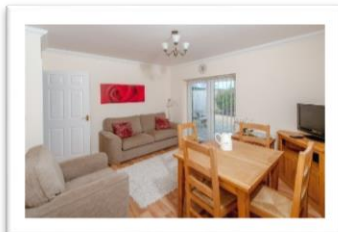
Website	smithcottageslangport.co.uk
----------------	--

*hope that this list will help you find suitable accommodation for your visit to **Bibic**. It is your responsibility to contact the proprietors before booking to ensure that your needs can be met. ***Please remember to check prices****

Harleys Court Holiday Cottages
 The Barn at Freshfields
 Cartway Lane
 Somerton
 Somerset
 TA11 6JH
 Tel:- 01458 273953

Facilities.

Disabled access	Yes
Bath/Shower	Shower only
Pets	Yes
Family rooms	Three two bedroom cottages
Catering for special diets	No
Self-catering facilities	Yes
Meal availability	None
TV/DVD	Yes
Tea and coffee making	Yes
Cot available	Yes
High chair available	Yes
Close to main road	Yes
Garden	Yes
Costs	Check website or phone.
Wi Fi	Yes
Extra	Hot tub room. Multiple cottages, pictures are of one cottage.



Website

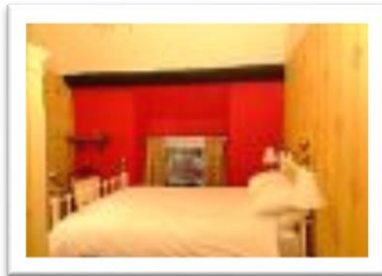
www.harleyscourtholidaycottages.co.uk

hope that this list will help you find suitable accommodation for your visit to **Bibic**. It is your responsibility to contact the proprietors before booking to ensure that your needs can be met. ***Please remember to check prices***

The White Hart (Public House and B&B)
 Market Place
 Somerton
 Somerset
 TA11 7LX
 Tel:- 01458 272273

Facilities.

Disabled access	No wheelchair access to rooms
Bath/Shower	Rooms En Suite
Pets	Check with proprietor
Family rooms	Double rooms – check with proprietor re: family rooms
Catering for special diets	
Self-catering facilities	No
Meal availability	Breakfast, lunch and evening meal. Children allowed in restaurant until 9 pm
TV/DVD	TV
Tea and coffee making	Yes
Cot available	
High chair available	Yes
Close to main road	Yes
Garden	Beer garden/Patio area
Costs	Double Rooms from £85 per night
Wi Fi	



Website	
----------------	--

*hope that this list will help you find suitable accommodation for your visit to **Bibic**. It is your responsibility to contact the proprietors before booking to ensure that your needs can be met. ***Please remember to check prices****

Modern apartment in converted Edwardian Grange

Langport

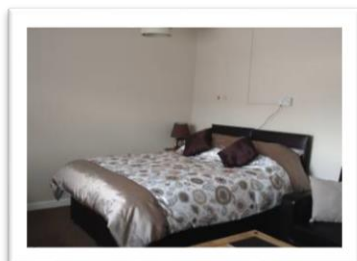
Somerset

(Just across the road from bibic)

[Use web link to book](#)

Facilities

Disabled access	No
Bath/Shower	Shower/Bath
Pets	None
Family rooms	No
Self catering facilities	Yes – Fully fitted kitchen
Meal availability	Self catered
TV/DVD	TV in lounge
Tea and coffee making	Yes
Cot available	No
High chair available	No
Close to main road	Yes
Garden	None
Costs	Please see website for cost & booking
Wi-Fi	Yes
Parking	Space for two cars



Website

<https://www.ownersdirect.co.uk/accommodation/p8127382>

Other information

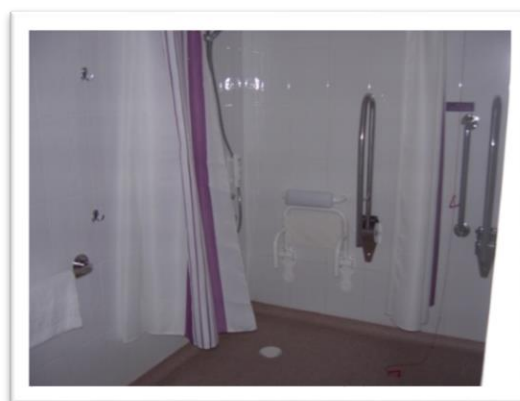
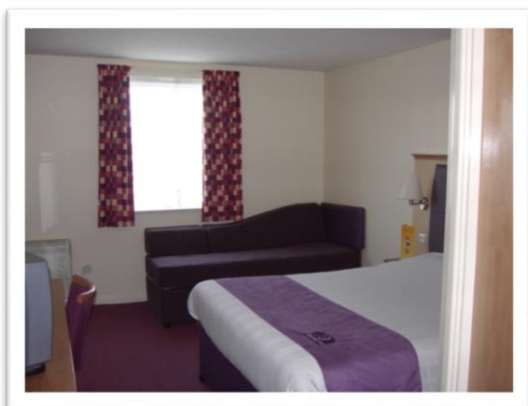
Private rental on the 3rd floor of a building with only staircase access.

hope that this list will help you find suitable accommodation for your visit to **Bibic**. It is your responsibility to contact the proprietors before booking to ensure that your needs can be met. ***Please remember to check prices***

Premier Inn, Bridgewater
Express Park
Bridgewater
TA6 4RR
Tel:- 0870 242 3344

Facilities

Disabled access	Yes
Bath/Shower	En Suite Shower/Bath
Pets	None. Unless guide dogs
Family rooms	3 disabled rooms and many family rooms on ground floor
Catering for special diets	Yes –advance notice can be given but doesn't need to be
Self catering facilities	None – there is a restaurant 2 minutes away. Coffee and tea making facilities in rooms
Meal availability	Breakfast, evening meal. Packed lunches also available by arrangement – this facility is from the restaurant.
TV/DVD	TV available but no DVD
Tea and coffee making	Yes
Cot available	Yes – needs to be booked when you call
High chair available	Yes in the restaurant
Close to main road	Yes
Garden	No
Costs	Please call for prices



Website	www.premierinn.com/en/hotel/BRIBRE/bridgewater
Other information	The restaurant next to the hotel frequently has meal deals

hope that this list will help you find suitable accommodation for your visit to **Bibic**. It is your responsibility to contact the proprietors before booking to ensure that your needs can be met. ***Please remember to check prices***

Premier Inn, Yeovil Town Centre
 Key Market House
 Middle Street
 Yeovil
 Somerset
 BA20 1LT
 Tel:- 0871 527 9426

Disabled access	Yes
Bath/Shower	Over bath only
Pets	
Family rooms	Yes – 2 adults, 2 children
Catering for special diets	No – Beefeater on site, J D Weatherspoons next door
Self-catering facilities	Tea and coffee making facilities – no fridge
Meal availability	No – see above
TV/DVD	TV
Tea and coffee making	yes
Cot available	
High chair available	Yes at restaurant
Close to main road	yes
Garden	no
Costs	Variable but booking as far in advance as poss is usually cheaper
Wi Fi	Yes



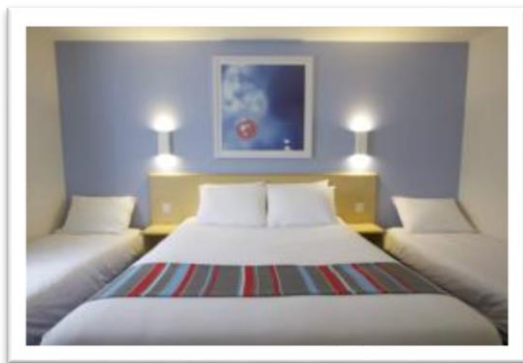
Website	www.premierinn.co.uk
----------------	--

hope that this list will help you find suitable accommodation for your visit to **Bibic**. It is your responsibility to contact the proprietors before booking to ensure that your needs can be met. ***Please remember to check prices***

Travelodge, Yeovil Podimore
 A303 Podimore
 Podimore Services
 Yeovil
 Somerset
 BA22 8JG
 Tel:- 0203 1954630

Facilities.

Disabled access	1 double room with disabled access & 1 twin/double
Bath/Shower	Over bath only
Pets	Dogs £20 per dog per stay
Family rooms	Yes – 2 adults, 2 children
Catering for special diets	No – Little Chef & Burger King on site.
Self-catering facilities	Tea and coffee making facilities – no fridge
Meal availability	Breakfast box from Travelodge, little chef & Burger King
TV/DVD	TV
Tea and coffee making	yes
Cot available	yes
High chair available	yes
Close to main road	yes
Garden	no
Costs	Variable but booking as far in advance as poss is usually cheaper
Wi Fi	30 mins free – 24 hr £3.



Website	www.travelodge.co.uk
----------------	--

*hope that this list will help you find suitable accommodation for your visit to **Bibic**. It is your responsibility to contact the proprietors before booking to ensure that your needs can be met. ***Please remember to check prices****