

Accommodation near bibic

Prices updated 2022



Withy House

Langport, Somerset, TA10 9QY

withycottages.co.uk
Email: mary@withycottages.co.uk
Tel: 01458 253099

Cost: £147 - £213 per night
Travel: 3 minute drive



There are two cottages that could be booked for your stay.

- 1 Withy Cottages sleeps 4 and has two bedrooms – one double and one twin, a travel cot is available
- 2 Withy Cottages sleeps 4 / 5 and has two bedrooms – one double and one twin with adult size bunk beds, a travel cot is available (please bring your own linen for the cot).

Both cottages have a full equipped kitchen, Wifi, Gas heating, Television and radio and much more.

Cleers View Farm

Somerton Hill, Somerton, TA10 9AD

cleersviewfarm.co.uk
Email: maiseywebb@yahoo.co.uk
Tel: 01458 272175

Cost: £34 - £40 per person per night
Travel: 5 minute drive from bibic



Cleers View Farm is a bungalow, and is therefore suitable for disabled guests. Please let us know when booking of any special requirements.

There are no hidden charges – your room rate includes breakfast, unlimited internet access, tea and coffee on arrival – and when you return each day.

We do not provide an evening meal, but are happy for guests to bring back takeaways to eat in the dining room, and can recommend some excellent local pubs and restaurants.

Number 5

5 Bancombe Road, Somerton, TA11 6SA

number-5.co.uk
Email: hello@number-5.co.uk
Tel: 07813 042823

Cost: £174 per night
Travel: 7 minute drive from bibic



Number 5 is a well proportioned house, with 1 family room (one double and one single bed) and two further double bedrooms. The large sitting room has a double sofa bed, making this a comfortable house sleeping 8 adults.

There is a large modern kitchen and a separate dining room seats 8 people. If you choose not to cook there are three excellent take-aways in Somerton – Tony's Fish and Chips, A Chinese and an Indian. Local pubs also offer evening meals and are a ten minute walk from the house.

The house is deep cleaned and sanitised in accordance with the government's Covid-19 guidelines between each stay. If it says unavailable or cleaning call Becky as she could be able to rearrange it.

Premier Inn

Key Market House, Middle Street, Yeovil, BA20 1LT

Cost from £50 per night

Travel 25 minute drive from bibic

- Disabled Access
- On-site Parking
- Tea and coffee
- Free Wifi & Television
- Kaspars & Beefeater restaurants below

www.premierinn.com

Tel: 0871 527 9426



"1st stay. This was our first time staying at Yeovil Town Centre Premier Inn, we wasn't sure what to expect but it was a pleasure. We were greeted by Vicki on reception on check in and she was there throughout our stay and was lovely very welcoming. Our room was clean and comfortable. We will definitely use this and other premier inns in the future."

West Knole House

Knole Causeway, Knole Langport, Somerset, TA10 9HY

Cost from £200 Per night

Travel 10 minute drive from bibic

West Knole house has a self-catering barn.
Full English breakfast can be added as a optional extra.

westknolehouse.co.uk

Email: beltanebandb@btinternet.com

Phone: +44 (0)1458 241978

Mob: +44 (0)7801 654252



Self-catering barn is on ground floor.

Set behind our beautiful thatched home in a quintessential small village, this delightful property is in an enviable location with super countryside views in a quiet location.

This accommodation was highly recommended by a previous bibic family.

Premier Inn

Morland Road, Glastonbury, Somerset, BA6 9FW

Cost from £50 per night

Travel 22 minute drive from bibic

- Disabled Access
- Tea and coffee
- Free Wifi & Television
- Brewers Fayre restaurant

www.premierinn.com

Tel: 0871 527 9426



"Quick night away, we booked in here for one Saturday night whilst visiting Glastonbury and Clarks Village. Its ideally situated half way between both and about a 15-20 minute walk to either one. Check in is quick and easy but strictly at 4pm. They do not allow early check in due to Covid. The hotel and room were everything you come to expect from a Premier Inn, comfortable bed and very clean. There was plenty of free parking so no need to worry about that."

Premier Inn

Massingham Park, Priorswood Road, Taunton, TA2 7RX

Cost from £50 per night

Travel 30 minute drive from bibic

- Disabled Access
- Tea and coffee
- Free Wifi & Television
- Brewers Fayre restaurant

www.premierinn.com

Tel: 0871 527 9426



"Great experience. The the staff were warm and welcoming. The room and facilities were clean and all that we needed. Additional coffee, milk etc were available at reception. A good price. Breakfast at the restaurant next door was really good and great value for money. I have stayed here twice now and would definitely recommend and will revisit when in the area again."

ibis Bridgwater

Woodlands Court, Business Park, Bristol Road, Bridgwater, TA6 4FJ

Cost from £48 per night

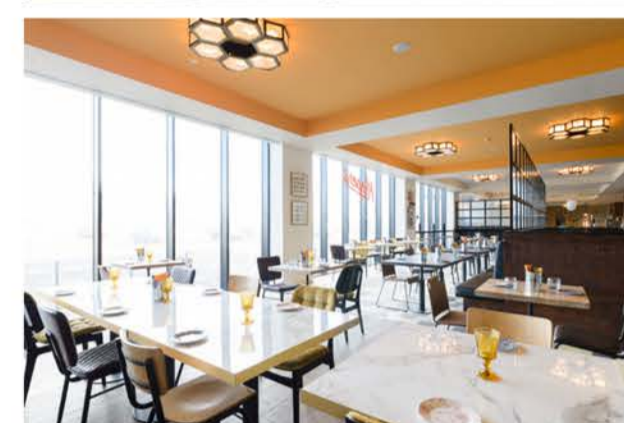
Travel 26 minute drive from bibic

- Accessible
- Pet Friendly
- Free Wifi
- Breakfast
- Parking
- Restaurant



www.all.accor.com

Tel: 0871 663 0624



Every room boasts a super-soft ibis Sweet Bed, fast Wi-Fi, and a smart TV. So you can settle in and enjoy all the comforts of home when you choose the ibis Bridgwater.

Premier Inn

Express Park, Bridgwater, TA6 4RR

Cost from £50 per night

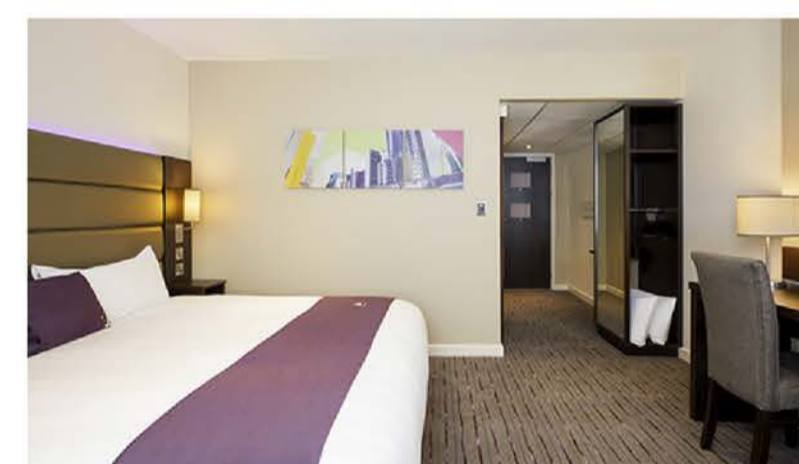
Travel 40 minute drive from bibic

- Disabled Access
- Chargeable on-site Parking
- Tea and coffee
- Free Wifi & Television
- Beefeater restaurant below



www.premierinn.com

Tel: 0871 527 9426



"Excellent customer service. We arrived early morning and were pleased to see we could register our car and leave it in the car park while we walked to the town. Upon our return we were able to access our room early. The receptionist, Megan, showed a very high standard of customer service and was both friendly but professional. After I had booked the room in July, I telephoned to request a downstairs room and again the person I spoke to was very helpful. Thank you Premier Inn Bridgewater for making our booking and stay so easy. Our room is perfect."

Leafy Fields Glamping

Ingleton Farm, Ashill Moor, Devon EX15 3NP

Cost from £75 per night

Travel 45-50 minute drive from bibic

We are a very small independent family run glamping site.

www.leafyfieldsglamping.com

Email: leafyfieldsglamping@yahoo.com

Tel: 0784 232 0981



our site is on the edge of the pretty village of Ashill next to a working dairy farm, near the Blackdown Hills, area of outstanding natural beauty. We offer luxury camping known as glamping with comfy beds and plenty of open space to relax in. On our field we have 2 cats and 4 miniature horses who would love to be your friends.

Raising a family on the autistic spectrum gives us a different perspective on a holiday in Devon and what can make a good family holiday.

There is a sensory room you can use on your stay.

If you have any questions, please speak to a member of our Family Services Team

01458 253344

info@bibic.org.uk